



Chelsea International

38 Bruton Place, London W1



Price: £3,150,000 Leasehold

Three Bedrooms : Reception : Kitchen : 2 Bathrooms : Private Roof Terrace : Garage

Situated just off Berkeley Square in Mayfair in this lovely, quiet enclave, a three bedroom house (approx 2000 square feet) offering spacious, well proportioned living space, a garage (double length) and access to it's own private roof terrace. The property would ideal for as a London Pied a Terre or as a family home.

CHELSEA INTERNATIONAL

15 Radnor Walk

London SW3 4BP

Fax- 020 7349 9967

Sales

020 7349 9094

Lettings

020 7349 9495

www.chelseainternational.co.uk

Terms and Conditions

Tenure

Leasehold; 95 years remaining

Ground Rent:

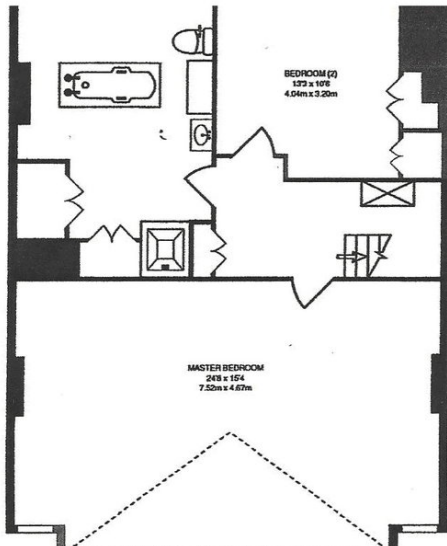
£240 per annum

Price

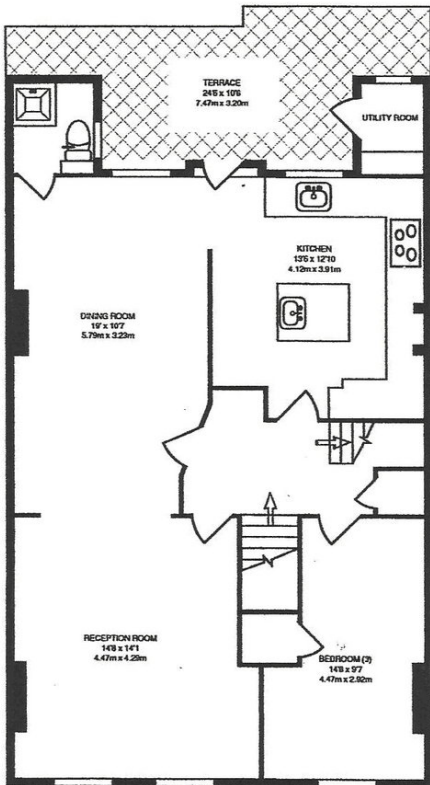
£3,150,000 Subject To Contract

THE PROPERTY MISDESCRIPTIONS ACT 1993

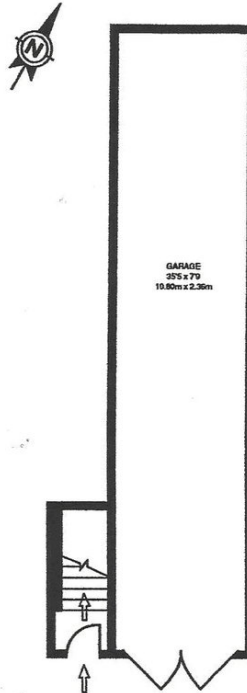
The Agent has not tested any apparatus, equipment, fixtures and fittings or services and so cannot verify that they are in working order or fit for the purpose. A Buyer is advised to obtain verification from their Solicitor or Surveyor. References to the Tenure of a Property are based on information supplied by the Seller. The Agent has not had sight of the title documents. A Buyer is advised to obtain verification from their Solicitor.



SECOND FLOOR GROSS INTERNAL FLOOR AREA
 776 SQ FT/72.16 SQ M



FIRST FLOOR GROSS INTERNAL FLOOR AREA
 886 SQ FT/82.39 SQ M



GROUND FLOOR
 GROSS INTERNAL FLOOR AREA
 310 SQ FT/28.84 SQ M

Representation of current layout, floor area approx 1,973 Sq Ft (183 Sq M)