



Chelsea International

Ground Floor Flat, 34 Tite Street, London SW3



Price: £775,000 Share of Freehold

2 Bedrooms : Bathroom : Kitchen : Reception Room

Arranged over the raised ground floor of this historic building in Tite Street, a delightful two bedroom apartment (approx. 700 square feet) with high ceilings and well-proportioned living space. The property would now benefit from some updating.

CHELSEA INTERNATIONAL

15 Radnor Walk

London SW3 4BP

Fax- 020 7349 9967

Sales

020 7349 9094

Lettings

020 7349 9495

www.chelseainternational.co.uk

Terms and Conditions

Tenure

Leasehold; plus share of Freehold

Service Charge:

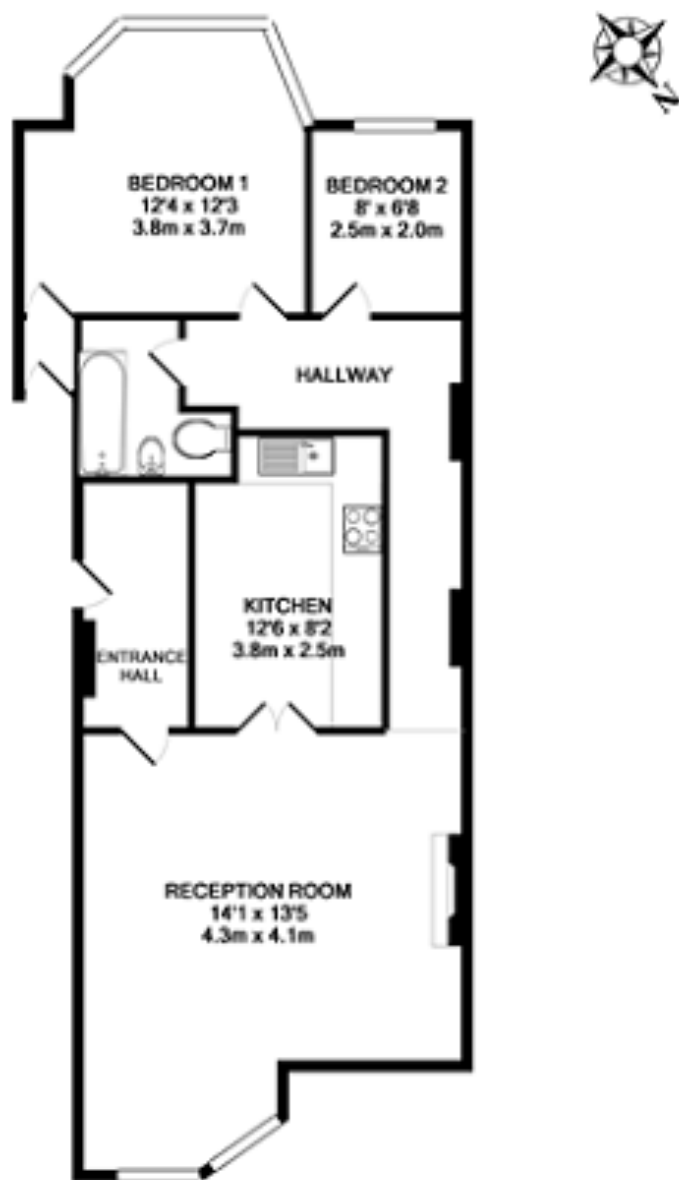
£2000 pa

Price

Guide Price £775,000 Subject To Contract

THE PROPERTY MISDESCRIPTIONS ACT 1993

The Agent has not tested any apparatus, equipment, fixtures and fittings or services and so cannot verify that they are in working order or fit for the purpose. A Buyer is advised to obtain verification from their Solicitor or Surveyor. References to the Tenure of a Property are based on information supplied by the Seller. The Agent has not had sight of the title documents. A Buyer is advised to obtain verification from their Solicitor.



TOTAL APPROX. FLOOR AREA 633 SQ.FT. (58.8 SQ.M.)