



Chelsea International

River Lodge, 128 Grosvenor Road, London SW1



Price: £12,000,000 Freehold

10 Self Contained Apartments (8 Apartments With River Views) : 6 Car Parking Spaces : Lift : Porters Station

River Lodge is a recently built residential block set over ground and four upper floors with direct frontage onto the River Thames. The accommodation comprises ten self contained apartments (of 12 with the building), set over ground and three upper floors. The property currently provides 4 one bedroom flats, 2 two bedroom flats and 4 three bedroom flats. 8 of the 10 apartments have river views over the Thames with Battersea to the south. The property further benefits from six parking spaces, lift, porters station at the main entrance which is set behind electronic gates. Finally, 3 out of the 10 flats are currently tenanted with a gross income of £79,820.

CHELSEA INTERNATIONAL

15 Radnor Walk

London SW3 4BP

Fax- 020 7349 9967

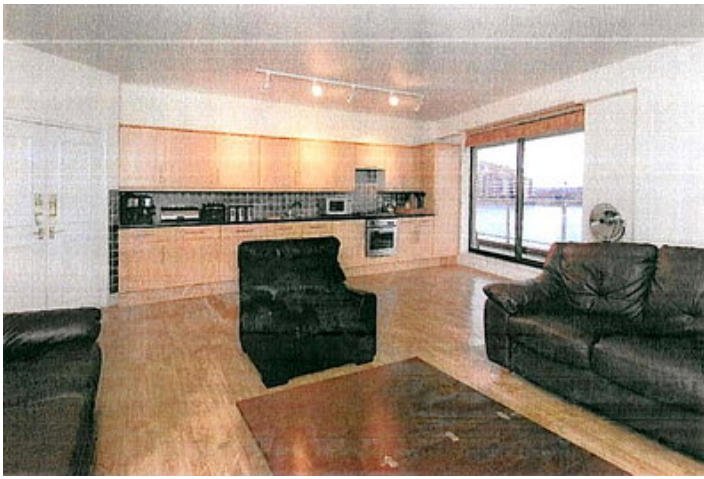
Sales

020 7349 9094

Lettings

020 7349 9495

www.chelseainternational.co.uk



Terms and Conditions

Tenure

Freehold

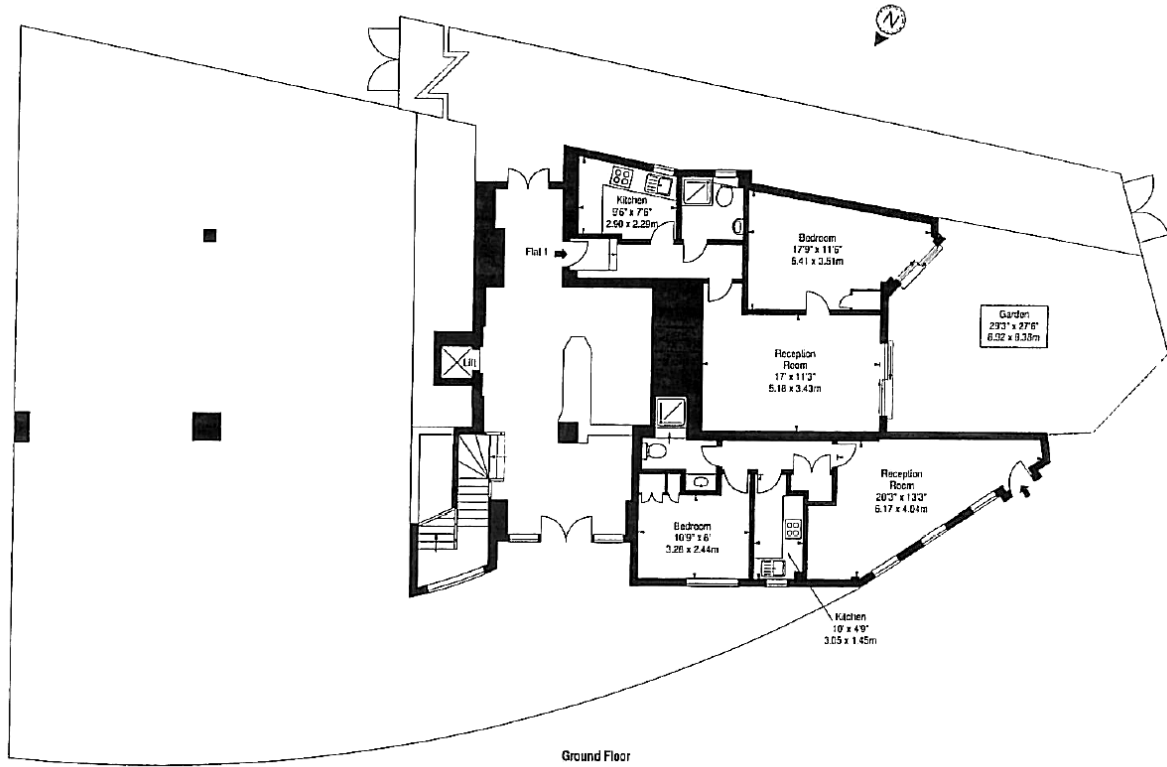
Price

£12,000,000 Subject To Contract

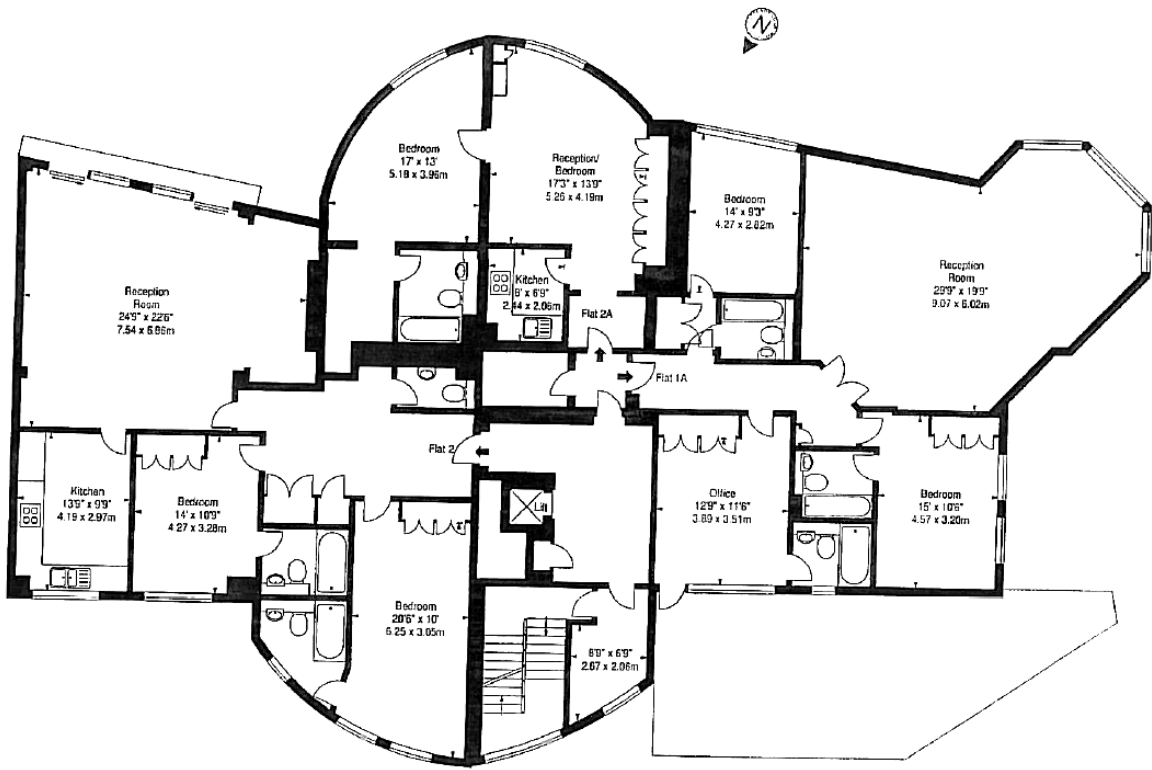
THE PROPERTY MISDESCRIPTIONS ACT 1993

The Agent has not tested any apparatus, equipment, fixtures and fittings or services and so cannot verify that they are in working order or fit for the purpose. A Buyer is advised to obtain verification from their Solicitor or Surveyor. References to the Tenure of a Property are based on information supplied by the Seller. The Agent has not had sight of the title documents. A Buyer is advised to obtain verification from their Solicitor.

Approx. Gross Internal Area *
13,336 Ft² - 1,233.34 M²

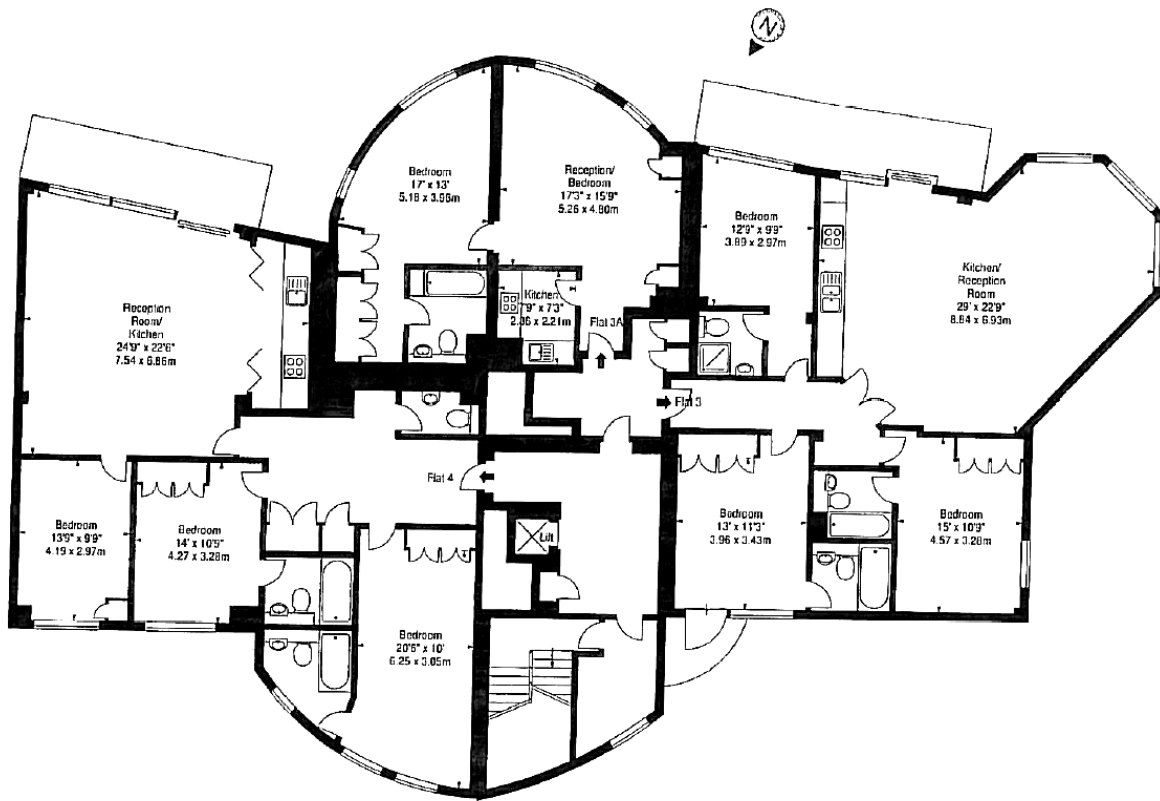


Approx. Gross Internal Area *
13,276 Ft² - (1233.34 M²)



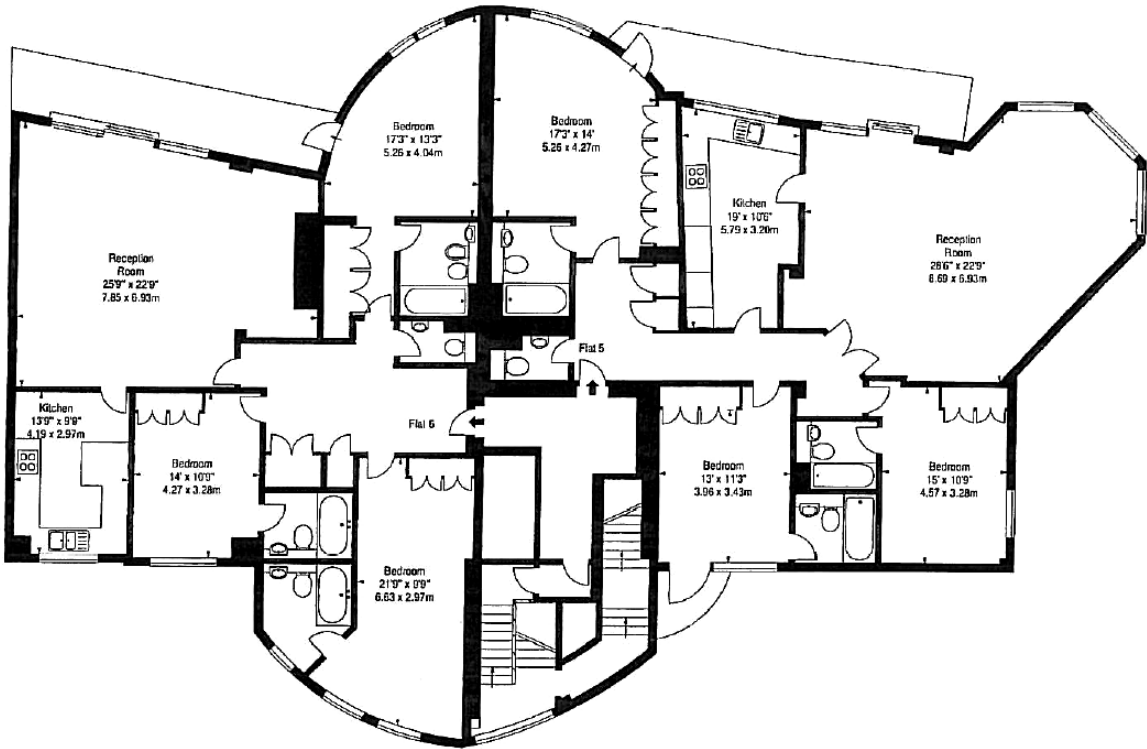
First Floor

Approx. Gross Internal Area *
13,276 Ft² • 1233.34 M²



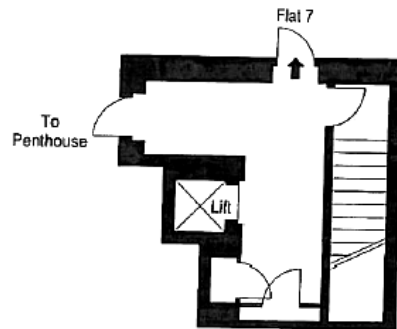
Second Floor

Approx. Gross Internal Area *
13,276 Ft² - 1233.34 M²



Third Floor

Approx. Gross Internal Area *
13,276 Ft² - 1233.34 M²



Fourth Floor